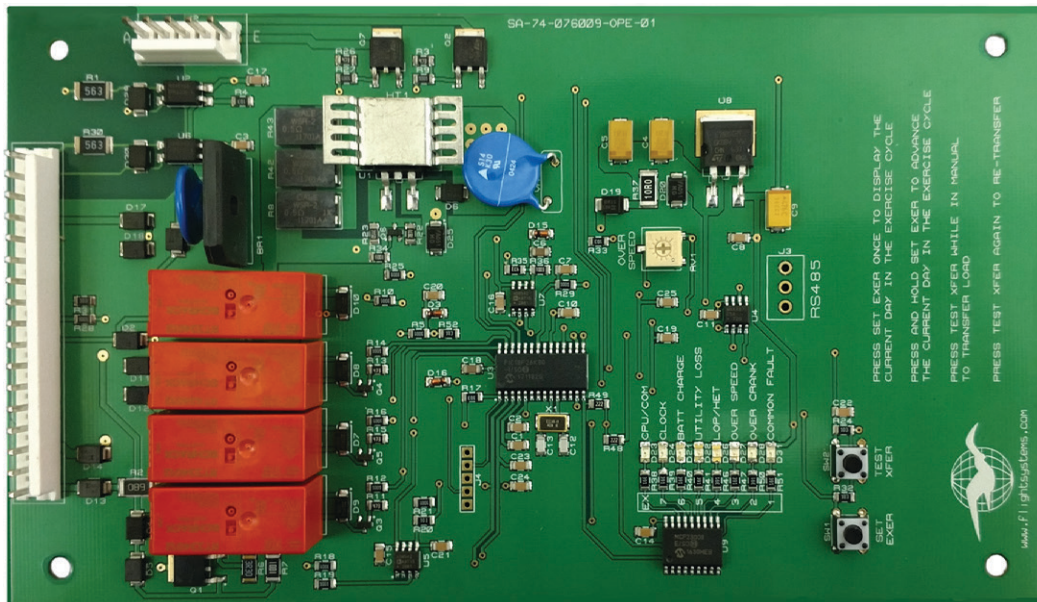


IMPROVED DIRECT REPLACEMENT FOR THE GENERAC® 076009ASRV CONTROL



IMPROVED FEATURES INCLUDE:

- Drop-in Replacement
- Updated design utilizes state-of-the-art components
- Added Diagnostic Indicators
- Added Test Transfer Button for Testing the ATS Without Removing Power
- Added Feature to View and Set the Current Day in the Exerciser
- Added Backup Clock to Prevent Drift in the Exerciser During Power Outages
- Added RS485 Communication Option

TECHNICAL SUPPORT

Technical support is available by phone, fax or the internet for this and all Flight Systems products.

Phone: 717-590-7330 (8:00am - 4:30pm ET, M-F)

Fax: 717-590-7327 Web: <http://www.flightsystems.com/>

Designed & Built in USA by



FLIGHT SYSTEMS

207 Hempt Rd. Mechanicsburg, PA 17050 Ph: 717-590-7330 www.flightsystems.com

•See reverse for Warranty Policy, Repair Service and other Flight Systems Products

READ BEFORE INSTALLING!

Diagnostic Indicator Meanings:

CPU/COM: On solid when board is powered -- Flashes rapidly when exercising

CLOCK: Flashes when load voltage is present at the board

BATT CHARGE: Cycles on and off with the battery charger. 20 minutes on/20 minutes off

UTILITY LOSS: On solid when utility sensing is lost

LOP/HET: On solid when LOP or HET fault is triggered

OVER SPEED: Over speed fault indicator

OVER CRANK: Over crank fault indicator

COMMON FAULT: Common fault indicator

Programming the Exerciser:

You can use the external Set Exercise Time switch just like the original. Using the external exercise switch will set the exercise timer for the current day and time.

You can advance the exercise day with our replacement control by holding the on-board "SET EXER" button. The weekly cycle is represented by 7 LEDs (numbered on the board).

Example #1: You would like to set exercise for Friday and it is currently Monday -- Hold the "SET EXER" button until LEDs 1 through 4 light up. The exercise timer will now go off in 3 days.

Example #2: You would like to set exercise for Tuesday and it is currently Wednesday -- Hold the "SET EXER" button until LED 1 lights. The exercise timer will now go off in six days.

To view the current day in the exercise timer, press the on-board "SET EXER" button. Each illuminated LED represents a day (24 hours) that has already passed. The amount of time left on the exercise timer is represented by the number of LEDs that are off.

Example: You press the "SET EXER" button and LEDs 1 and 2 illuminate -- There are 5 days left until the exercise timer goes off.

Test Transfer Button:

While in Manual mode, you can transfer the load by using the on-board "TEST XFER" button. Press it once, the load will transfer. Press it again to retransfer.

WARRANTY POLICY

Replacement Generator Controls Manufactured by FLIGHT SYSTEMS

Note: Always Refer to the Specific Generator Set Manual when Troubleshooting Problems.

This Flight Systems manufactured replacement generator control is warranted to be free from defects in materials and workmanship for a period of two years from the date it was sold. *(This date appears on unit label)*

Flight Systems' Limited Warranty covers the repair or replacement of defective product within the warranty period. It does not cover the cost of installation, or removal costs incurred, or possible damage to other equipment (including the generator or parts thereof) as a result of this product.

Flight Systems (or its authorized agent) shall reserve the right to determine the cause of malfunction. *In the case if we determine that it was due to abuse, misuse, improper installation, acts of nature (such as storms), failure to perform recommended gen set maintenance procedure or problems elsewhere in the gen set, the warranty claim shall be disallowed and established repair rates shall apply. Ship defective units directly to:*

Flight Systems, 207 Hempt Rd. Mechanicsburg, PA 17050 - Attention: Warranty Repair

Please prepay all freight charges and note the nature of the failure, if known.

Return Policy: Unwanted items may only be returned within 30 days of original purchase date. Refund/credit issued shall be less a 25% per item restocking/re-test fee as long as unit is in new, undamaged condition. *Shipping charges are not refundable.*

REBUILDING SERVICE

If this product suffers a failure when out of warranty, it can be rebuilt. As with all Generator Controls Rebuilt by Flight Systems, a One-Year Warranty will be issued. Please contact us for current rebuild pricing. *Ship units to:*

Flight Systems, 207 Hempt Rd. Mechanicsburg, PA 17050 - Attn. Repair Dept.

Please prepay all freight charges and note the nature of the failure, if known.

TECHNICAL SUPPORT

Technical support is available by phone, fax or the internet for all Flight Systems products.

Phone: 717-590-7330 (8:00am - 4:30pm ET, M-F)

Fax: 717-590-7327 Web: <http://www.flightsystems.com/>

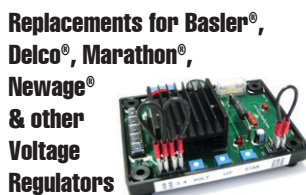
Our Low-cost, improved replacements for over 100 Onan® Kato® Kohler® and other OE part numbers include:



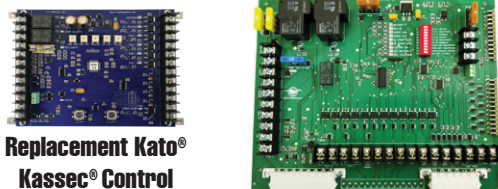
Onan® RV, Marine & Standby Gen Set/ATS Controls/VR Replacements



Replacement Kohler® DEC III Gen Set Control

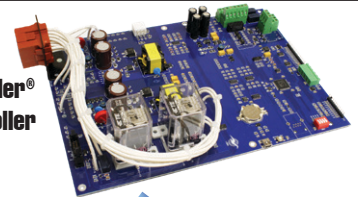


Replacements for Basler®, Delco®, Marathon®, Newage® & other Voltage Regulators

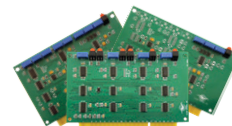


Replacement Kato® Kasec® Control

Replacement Kohler® MPAC 1500 Controller



Replacement Onan® OT III Sensing and Time Delay Cards



'Slick Stick' Slip Ring Cleaning Tool



Gen Set Control/Monitoring Solutions

GenStart 500

Drop-in replacement for all DGC-500 variants. Easy to use interface. No software needed!



GENPULSE Generator Exercise Monitor

CONTROLS REBUILDING SERVICE

Flight Systems rebuilds over 500 different Onan®, Kohler®, Generac®, Basler®, ASCO®, Kato®, GE-Zenith® and other Generator & ATS Controls. Rebuild-Exchange Service is often available. (1-Year warranty)

We also rebuild Cruisair® and other Marine & RV controls. Please call or see our website for a complete list.

Ph: 800-403-3728 (8-5:00 ET, M-F)
www.flightsystems.com

All FSI-built controls are proudly **Made in USA** *and backed by a two-year warranty*